



WORLD
SKATE
AMERICA



PANAMERICANO DE CLUBES Y NACIONES
HOCKEY EN LÍNEA
DAMAS Y VARONES / JÚNIOR Y SENIOR
OAXTEPEC - MÉXICO
OCTUBRE 1 - 19 / 2025

FEMEPAR



FEDERACIÓN MEXICANA DE PATINES SOBRE RUEDAS A.C.

HOTELS

PAN AMERICAN CHAMPIONSHIP INLINE HOCKEY CLUBS & NATIONS

LADIES & MAN/ JUNIOR & SENIOR

OAXTEPEC - MEXICO

OCTOBER 1 - 19 / 2025



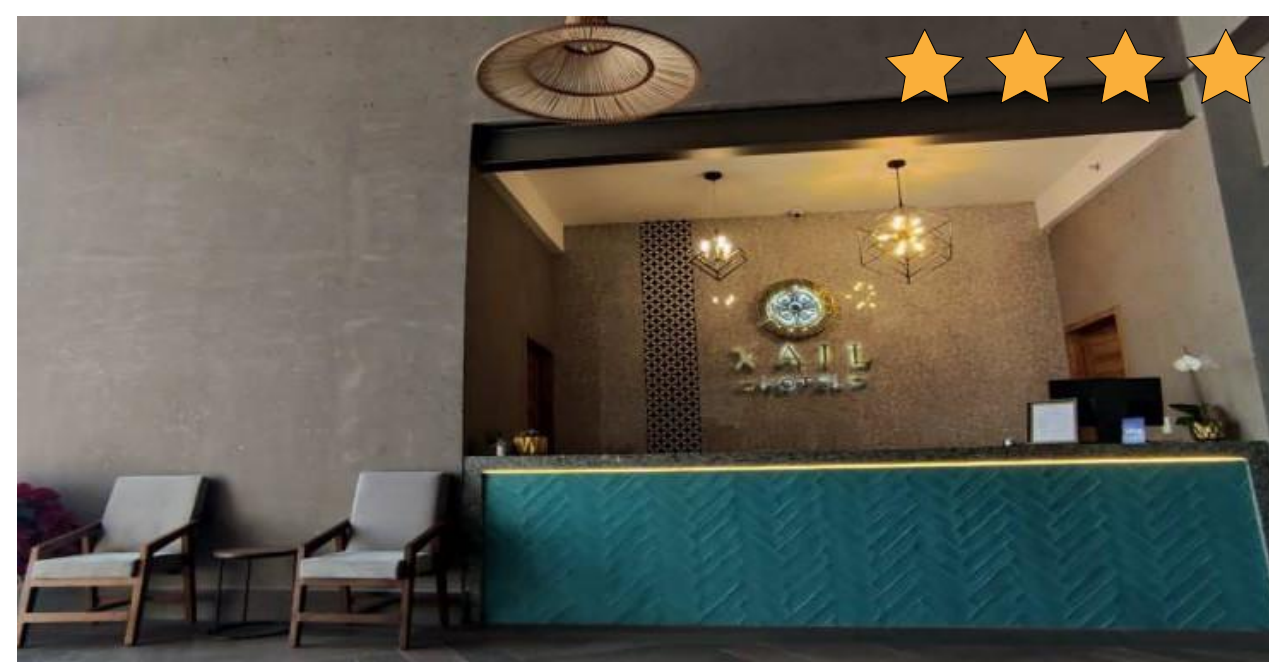
DORADOS CONVENTIONS & RESORT

Located within the sports complex. You can walk to the hockey pavilion.



➤ XAIL HOTEL

Located 2 kilometers from the hockey field. Those who book thru the organization will have official transportation.



➤ HOTEL MAGICO INN

Located 6 kilometers from the hockey field. Those who book thru the organization will have official transportation.



THE COLISEUM AND THE HOCKEY FIELD ARE PART OF THE SPORTS FACILITIES AT THE HOTEL DORADOS.



OPCIÓN 1 - RATE PACKAGE PER PERSON PER NIGHT WITH BREAKFAST

PACKAGE WITH BREAKFAST	1 King bed o 2 individuals		individual bed per person	
	Bugambilias		Palmas o Acacias	Palmas o Tulipanes
	Single	Double	Triple and Quadruple	
PRICE PER PERSON PER NIGHT	(\$80.00 usd)	(60.00 usd)	(\$45.00 usd)	

ALL PACKAGES INCLUDES BREAKFAST THE MORNING AFTER YOUR OVERNIGHT STAY.

OPCIÓN 2 – PERSON RATE PACKAGE WITH 3 MEALS (FULL BOARD).

PACKAGE WITH 3 MEALS	1 King bed o 2 individuals		individual bed per person	
	Bugambilias		Palmas o Acacias	Palmas o Tulipanes
	Single	Double	Triple a Quadruple	
PRICE PER PERSON PER NIGHT	(\$120.00 usd)	(\$100.00 usd)	(\$85.00 usd)	

ALL PACKAGES INCLUDE LUNCH UPON ARRIVAL AND BREAKFAST UPON DEPARTURE.

OPCIÓN 3 – RATE PACKAGE PER PERSON WITH 3 MEALS (FULL BOARD).

PACKAGE WITH 3 MEALS	1 King size bed or 2 king size beds or 2 double beds		
	Tabachines, Laureles or Cedros		
	Single	Double	Quadruple
PRICE PER PERSON PER NIGHT	(\$160.00 usd)	(\$115.00 usd)	(\$90.00 usd)

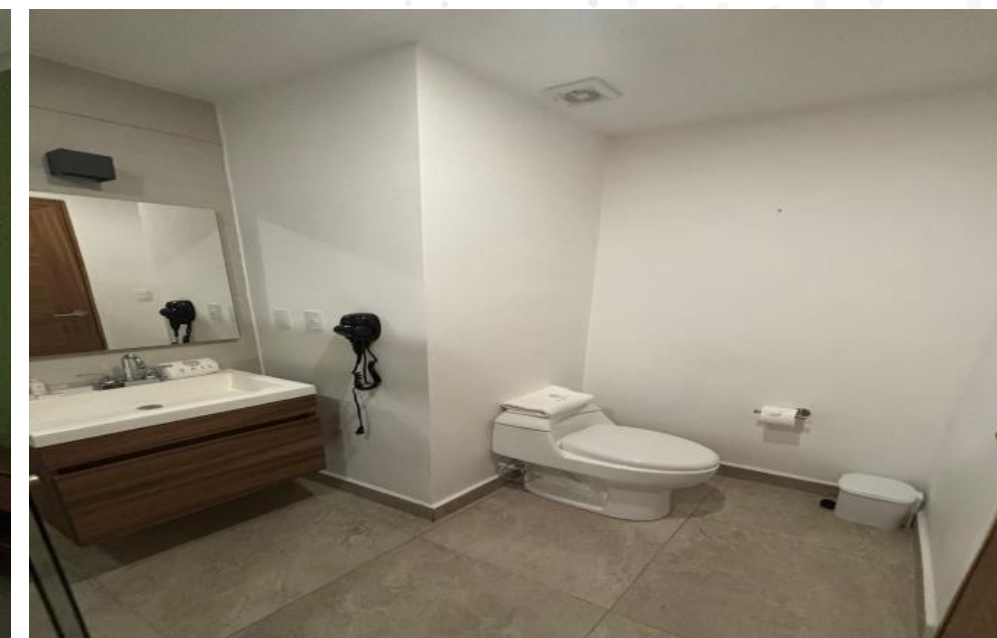
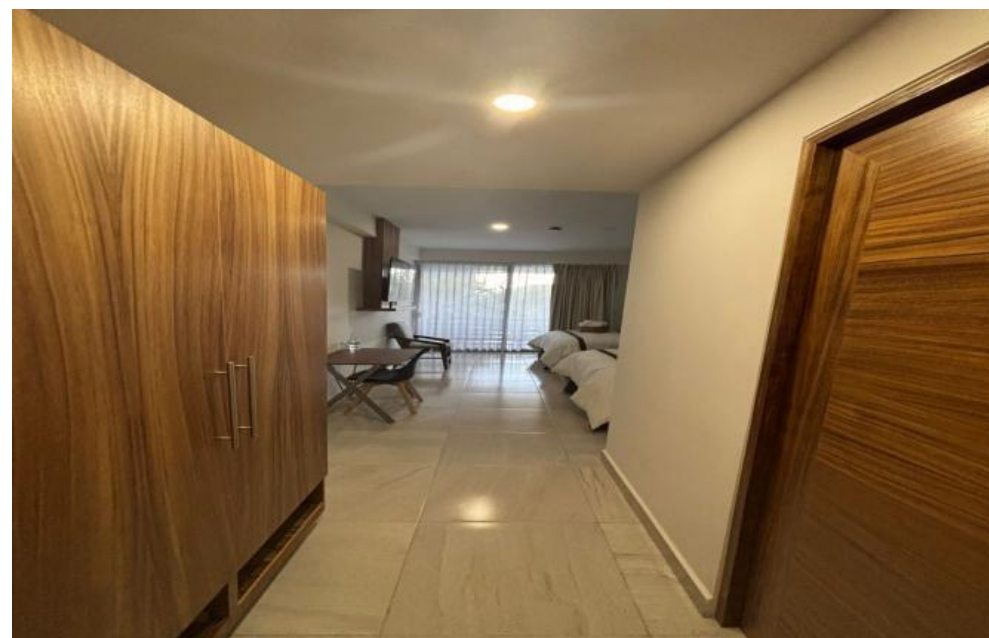
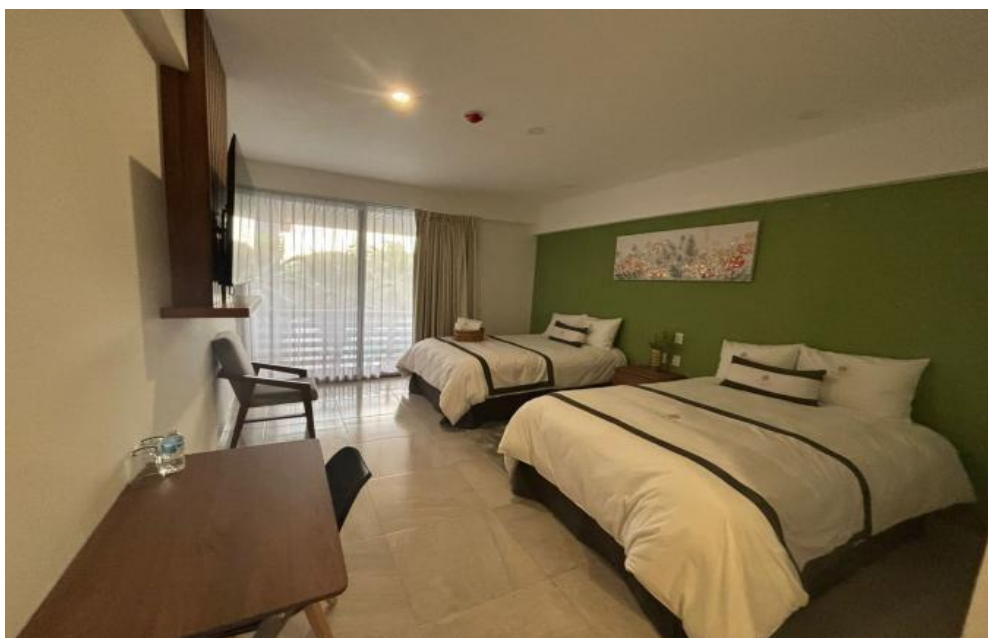
ALL PACKAGES INCLUDE LUNCH UPON ARRIVAL AND BREAKFAST UPON DEPARTURE.

OPCIÓN 4 – RATE PACKAGE PER NIGHT WITH BREAKFAST

PACKAGE WITH BREAKFAST	1 King size bed or 2 king size beds or 2 double beds		
	Tabachines, Laureles o Cedros		
	Single	Double	Quadruple
PRICE PER PERSON PER NIGHT	(\$130.00 usd)	(\$80.00 usd)	(60.00 usd)

ALL PACKAGES INCLUDES BREAKFAST THE MORNING AFTER YOUR OVERNIGHT STAY.

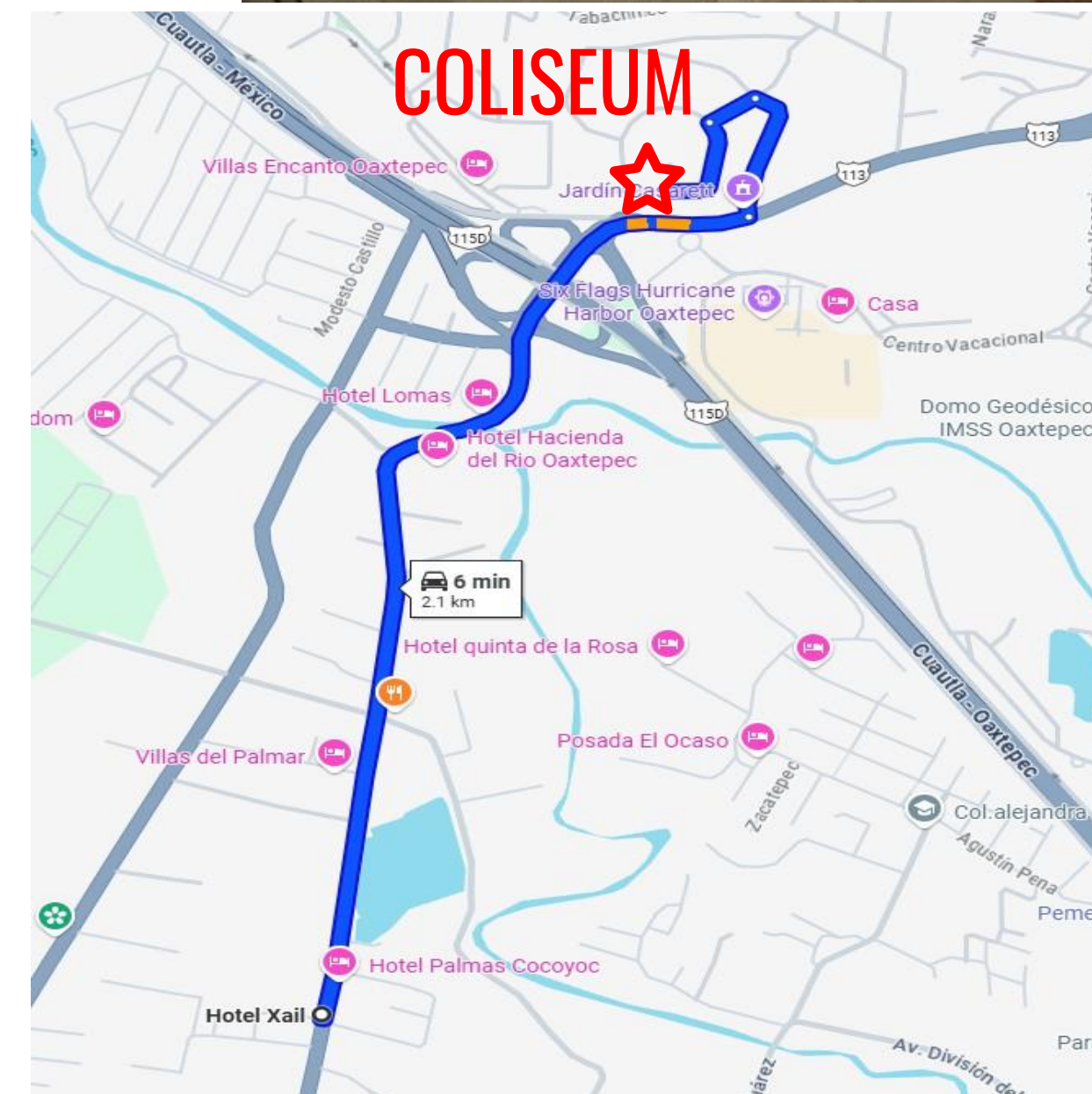
- Dinner price buffet kind 20.00 usd to general public.
- There will be à la carte food service (the cost will depend on what you order).

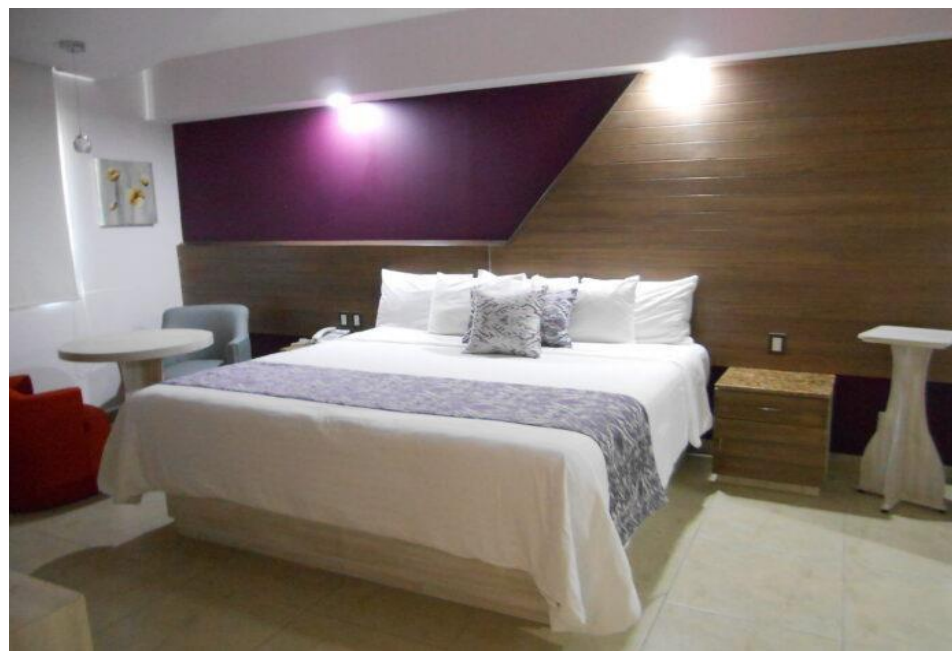


ROOM TYPE	DESCRIPTION	RATE
Single	1 King size bed with ventilator (1 person)	(\$ 92.00 usd)
Double	2 double bed con acondionate air (2 or until 4 people)	(\$ 114.00 usd)
Plus Single	1 King size bed with acondionate air (1 person)	(\$ 120.00 usd)
Suite	1 King size bed with acondionate air (1 o 2 people)	(\$ 174.00 usd)

FEEDING.

- Breakfast price \$ 304.00 m.n. (\$ 16.00 usd), includes main course, fruit and coffee.
- Lunch price \$ 380.00 m.n. (\$ 20.00 usd), includes day soup, main course and flavor water.
- Dinner price \$ 342.00 m.n. (\$ 18.00 usd), includes main course and coffee.
- Rooms are subject to availability, so we suggest you make your reservation in advance.
- Check-in from 3:00 PM. Check-out by 12:00 PM at the latest.





ROOM TYPE SINGLE/ DOUBLE	RATE	BREAKFAST RATE COMBO PER PERSON	BREAKFAST RATE BUFFET PER PERSON
Ejecutive	(\$ 95.00 usd)	(\$ 15.00 usd)	(\$ 18.00 usd)
Plus Ejecutivo	(\$ 108.00 usd)	(\$ 15.00 usd)	(\$ 18.00 usd)
Panoramics Ejecutivo	(\$ 112.00 usd)	(\$ 15.00 usd)	(\$ 18.00 usd)
Suite	(\$ 152.00 usd)	(\$ 15.00 usd)	(\$ 18.00 usd)

➤ **Cost per extra person in doble room (until 4 people) \$ 475.00 m.n (\$ 22.00 usd).**

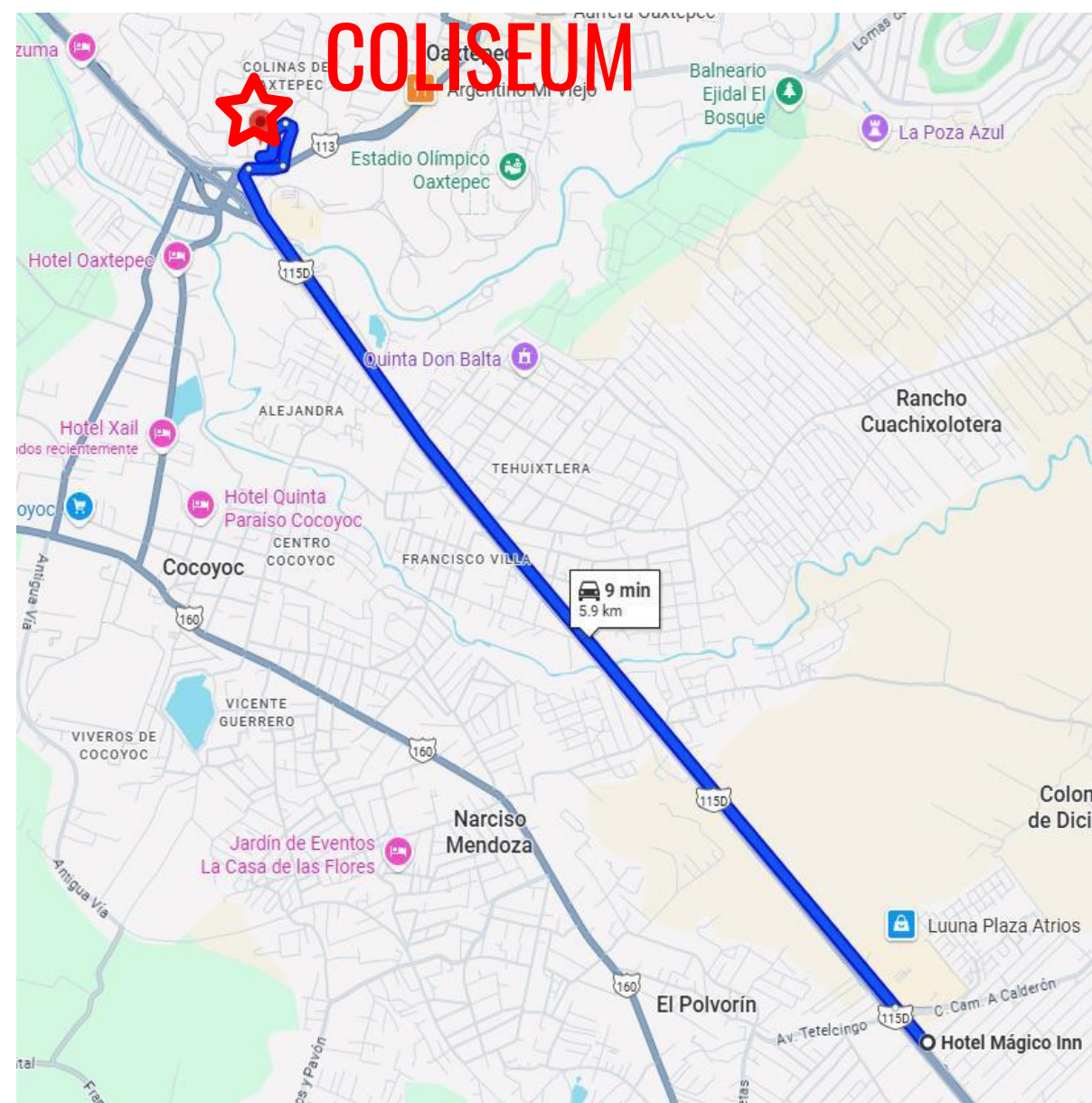
➤ **Combo breakfast includes main course, juice, coffee and bread.**

Rooms are subject to availability, so we suggest you make your reservation in advance.

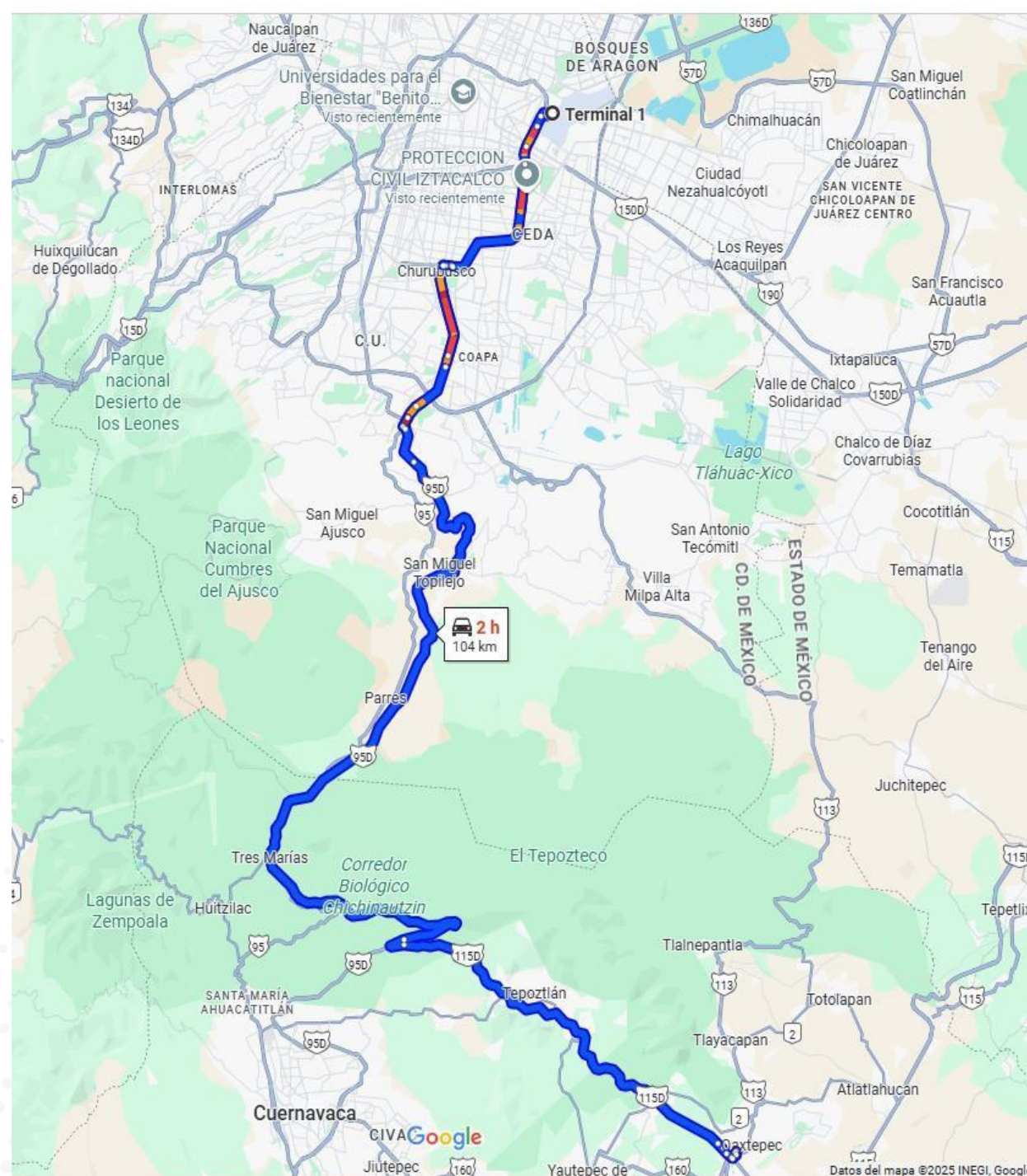
➤ **Restaurant open Monday thru Sunday from 7:00 am to 11:00 pm.**

➤ **Saturdays and Sundays: buffet breakfast from 8:00 am to 12:30 pm.**

➤ **Check-in from 3:00 PM; check-out by 1:00 PM at the latest.**



Benito Juárez International Airport



The Benito Juárez International Airport is located 1 hour and 30 minutes (105 km) from the city of Oaxtepec, the venue for the Pan American.

All delegations that book their hotels thru the organization will have official transportation from the airport to the hotel and from the hotel to the hockey field.

For Reservation

Contacts:

Griselda Torres

➤ **+52 55 2728 4420**

Oscar Olguin

➤ **+52 55 32287957**

WhatsApp

Emails:

➤ **fed.mex.patines@hotmail.com**

➤ **femepargrisel@hotmail.com**

➤ **femeparoscar@hotmail.com**

All delegations that book their hotels thru the organization will have official transportation from the airport to the hotel and from the hotel to the hockey field.

Mexican Roller Federation A.C